

GRADE
2


20 min
FIRE RATED*


MEETS ADA
STANDARDS


REVERSIBLE
PRODUCT


LIFETIME
WARRANTY

FEATURES






- Universal 6-in-1 latch
- High tensile steel anti-saw deadbolt with 1" throw
- High security deadbolt strike
- ADA thumbturn
- Exposed screw mount
- Meets ANSI/BHMA A156.2 Grade 2 Standards

* 20 MIN FIRE RATED WITH MORTISE FACEPLATE 




INSTALLATION

- Fits standard door thickness: 1-3/4" (45 mm) - 2-1/4" (57 mm)
- Fits 1-5/8" (41 mm) bore hole
- Anti-pry collar included

STOCKED FINISHES

-  Polished Chrome 26 (PC)
-  Matte Black 19 (BLK)
-  Satin Nickel 15 (SN)
-  Satin Chrome 26D (SC)
-  Satin Brass 4 (SB)

SPECIAL ORDER FINISHES

-  Dark Bronze 10B (DB)
-  Gun Metal (GM)
-  Satin Stainless 32D (SS)



ROUND



SQUARE

BOX PACK	POLISHED CHROME 26	MATTE BLACK 19	SATIN NICKEL 15	SATIN CHROME 26D	SATIN BRASS 4
ROUND SINGLE SIDED DEADBOLT	30-D01408PC	30-D01408BLK	30-D01408SN	30-D01408SC	30-D01408SB
SQUARE SINGLE SIDED DEADBOLT	30-D01406PC	30-D01406BLK	30-D01406SN	30-D01406SC	30-D01406SB

HOW TO SPECIFY SPECIAL ORDER FINISHES

Please contact your Taymor Sales Representative for pricing, samples, and minimum order quantities.

To determine the item code for a special order finish product, simply add the finish code at the end of the product SKU as shown below:

FINISH	FINISH CODE
Satin Brass 4	SB
Dark Bronze 10B	DB
Gun Metal	GM
Polished Chrome 26	PC
Matte Black 19	BLK
Satin Nickel 15	SN
Satin Stainless 32D	SS
Satin Chrome 26D	SC

30

-

D006464

GM

LINE CODE

SKU

FINISH CODE

30-D006464GM

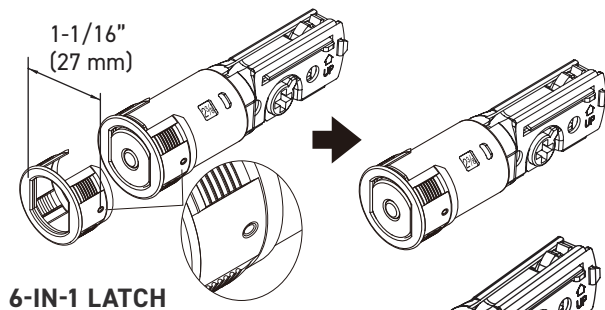
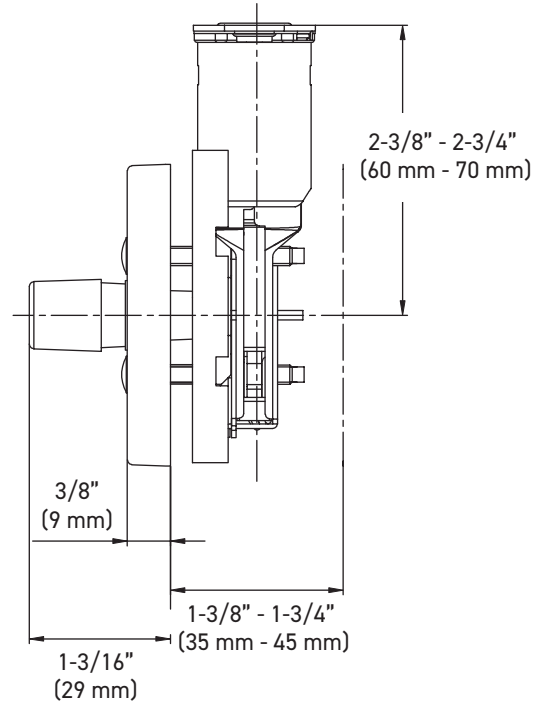
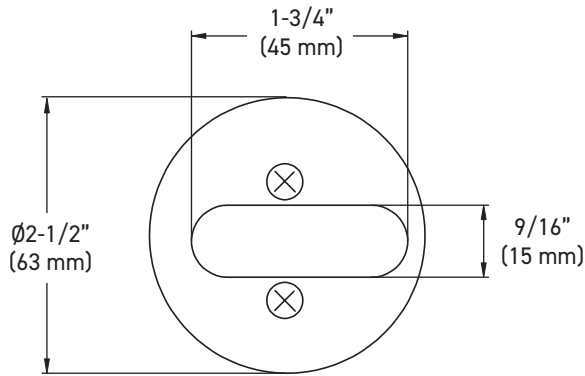
Example of the item codes for the Vega Round Rose Lever in Gun Metal:

FUNCTIONS	LINE CODE	SKU	FINISH CODE	ITEM CODE
Privacy	30	D006424	GM	30-D006424GM
Passage 🔥	30	D006434	GM	30-D006434GM
Inside Trim	30	HL0064	GM	30-HL0064GM
Dummy	30	644	GM	30-644GM

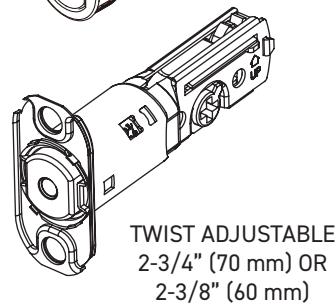
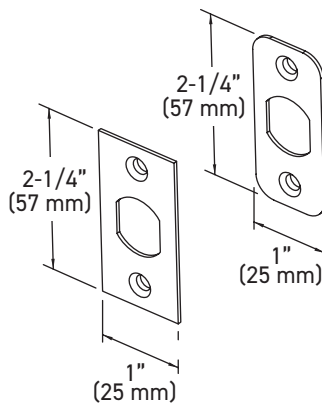
ADDITIONAL DETAILS

- Special order products are not eligible for return or exchange
- Lead times September vary
- Minimum order quantities apply

ROUND SINGLE SIDED DEADBOLT LOCK ASSEMBLY

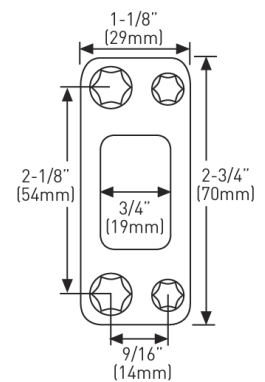


6-IN-1 LATCH



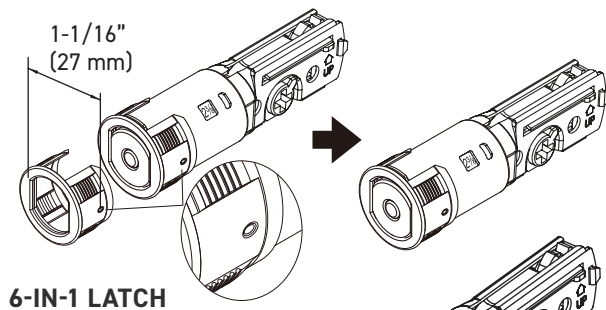
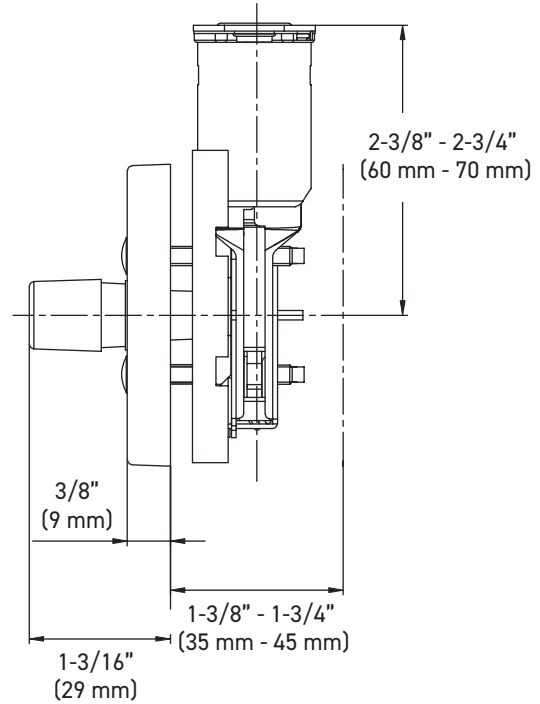
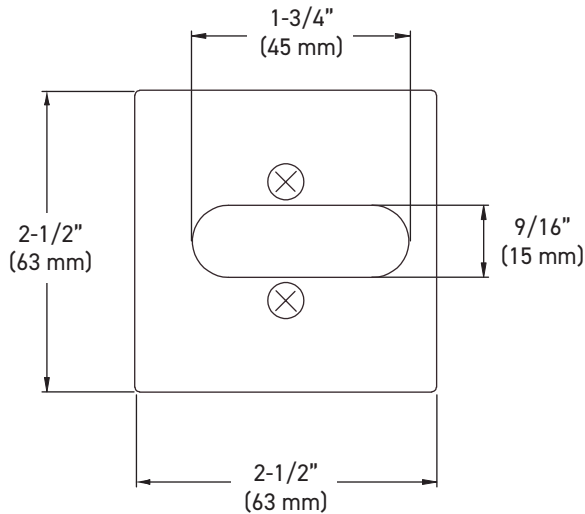
TWIST ADJUSTABLE
2-3/4" (70 mm) OR
2-3/8" (60 mm)

HIGH SECURITY STRIKE

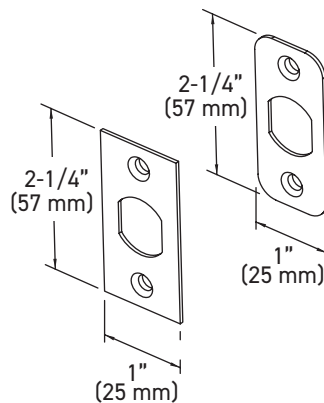


MEASUREMENTS SUBJECT TO A 3% VARIANCE. MEASUREMENTS ARE FOR REFERENCE ONLY. TAYMOR RESERVES THE RIGHT TO CHANGE PRODUCT SPECS WITHOUT NOTICE.

SQUARE SINGLE SIDED DEADBOLT LOCK ASSEMBLY

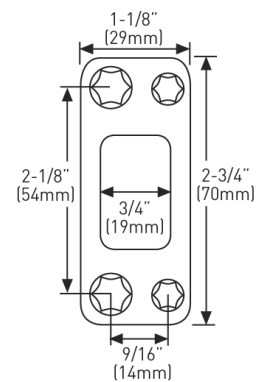


6-IN-1 LATCH



TWIST ADJUSTABLE
 $2\frac{3}{4}"$ (70 mm) OR
 $2\frac{3}{8}"$ (60 mm)

HIGH SECURITY STRIKE



MEASUREMENTS SUBJECT TO A 3% VARIANCE. MEASUREMENTS ARE FOR REFERENCE ONLY. TAYMOR RESERVES THE RIGHT TO CHANGE PRODUCT SPECS WITHOUT NOTICE.