

GRADE
2

SC4
KEYWAY

WR5
KEYWAY

20 min
FIRE RATED*

MEETS ADA
STANDARDS

REVERSIBLE
PRODUCT

LIFETIME
WARRANTY

OPTIONAL

FULL KEYING
SERVICES
AVAILABLE

FEATURES

- Universal 6-in-1 latch
- High tensile steel anti-saw deadbolt with 1" throw
- High security deadbolt strike
- ADA thumbturn
- Concealed screw mount
- 6-pin SC4 keyway with full keying services available
- 5-pin WR5 keyway with full keying services available
- Meets ANSI/BHMA A156.2 Grade 2 Standards

* 20 MIN FIRE RATED WITH MORTISE FACEPLATE

INSTALLATION

- Fits standard door thickness: 1-3/4" (45 mm) - 2-1/8" (54 mm)
- Fits 1-1/2" (38 mm) or 2-1/8" (54 mm) bore hole
- Anti-pry collar included

STOCKED FINISHES

-
- Polished Chrome 26 (PC)
-
- Matte Black 19 (BLK)
-
- Satin Nickel 15 (SN)
-
- Satin Chrome 26D (SC)
-
- Satin Brass 4 (SB)

SPECIAL ORDER FINISHES

-
- Dark Bronze 10B (DB)
-
- Gun Metal (GM)
-
- Satin Stainless 32D (SS)



ROUND FLUSH



SQUARE FLUSH



BOX PACK	POLISHED CHROME 26	MATTE BLACK 19	SATIN NICKEL 15	SATIN CHROME 26D	SATIN BRASS 4
ROUND FLUSH DEADBOLT SC4 KEYWAY	30-D01SC408PC	30-D01SC408BLK	30-D01SC408SN	30-D01SC408SC	30-D01SC408SB
ROUND FLUSH DEADBOLT WR5 KEYWAY	30-D01WR408PC	30-D01WR408BLK	30-D01WR408SN	30-D01WR408SC	30-D01WR408SB
SQUARE FLUSH DEADBOLT SC4 KEYWAY	30-D01SC406PC	30-D01SC406BLK	30-D01SC406SN	30-D01SC406SC	30-D01SC406SB
SQUARE FLUSH DEADBOLT WR5 KEYWAY	30-D01WR406PC	30-D01WR406BLK	30-D01WR406SN	30-D01WR406SC	30-D01WR406SB

HOW TO SPECIFY SPECIAL ORDER FINISHES

Please contact your Taymor Sales Representative for pricing, samples, and minimum order quantities.

To determine the item code for a special order finish product, simply add the finish code at the end of the product SKU as shown below:

FINISH	FINISH CODE
Satin Brass 4	SB
Dark Bronze 10B	DB
Gun Metal	GM
Polished Chrome 26	PC
Matte Black 19	BLK
Satin Nickel 15	SN
Satin Stainless 32D	SS
Satin Chrome 26D	SC

30

-

D006464

GM

LINE CODE

SKU

FINISH CODE

30-D006464GM

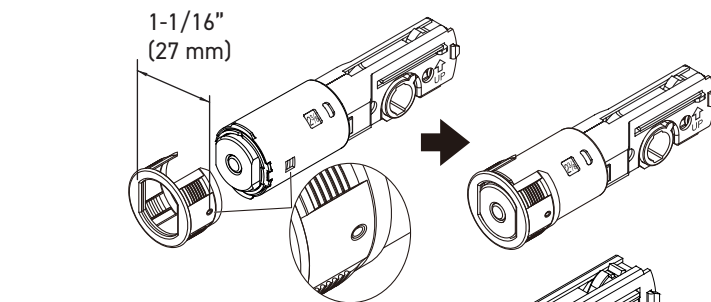
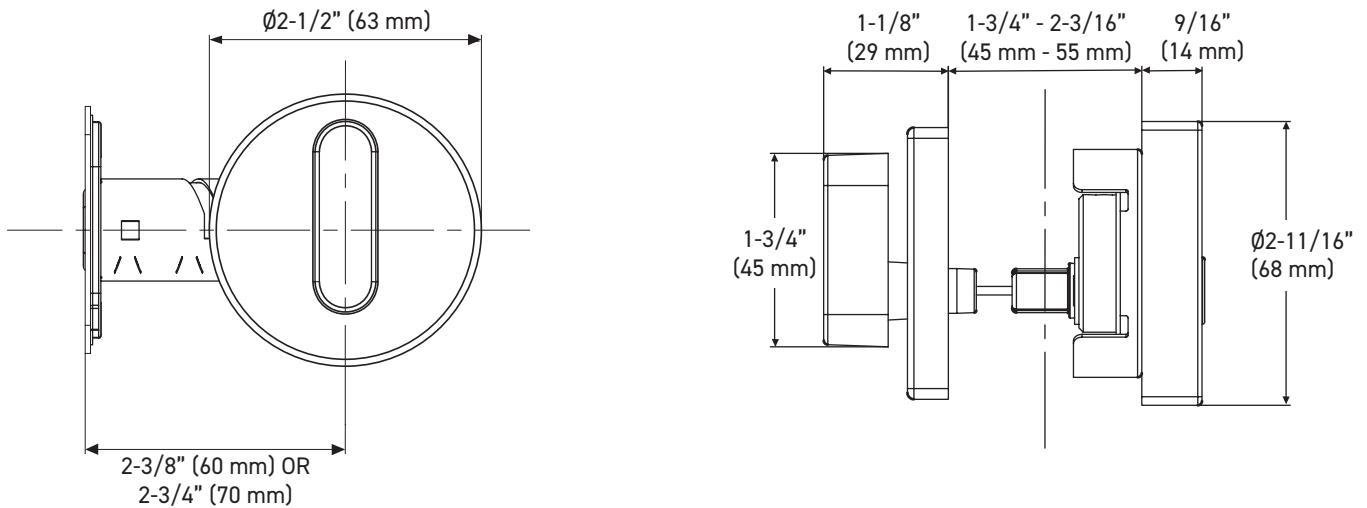
Example of the item codes for the Vega Round Rose Lever in Gun Metal:

FUNCTIONS	LINE CODE	SKU	FINISH CODE	ITEM CODE
Privacy	30	D006424	GM	30-D006424GM
Passage 🔥	30	D006434	GM	30-D006434GM
Inside Trim	30	HL0064	GM	30-HL0064GM
Dummy	30	644	GM	30-644GM

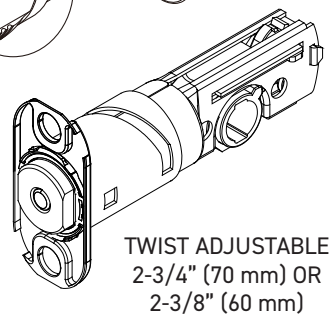
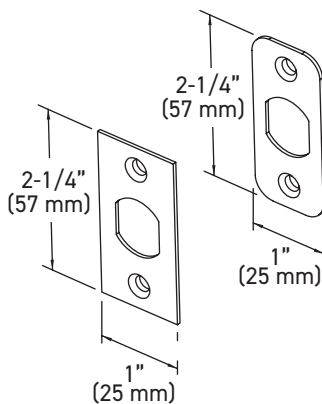
ADDITIONAL DETAILS

- Special order products are not eligible for return or exchange
- Lead times September vary
- Minimum order quantities apply

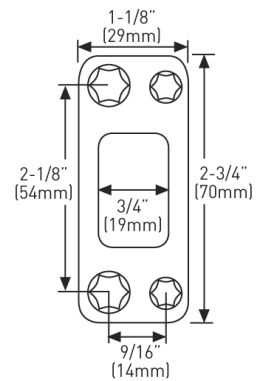
ROUND FLUSH DEADBOLT LOCK ASSEMBLY



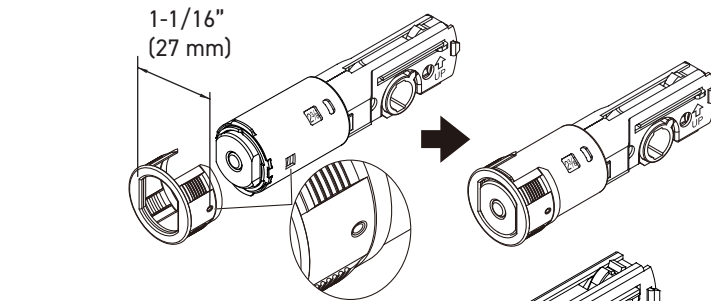
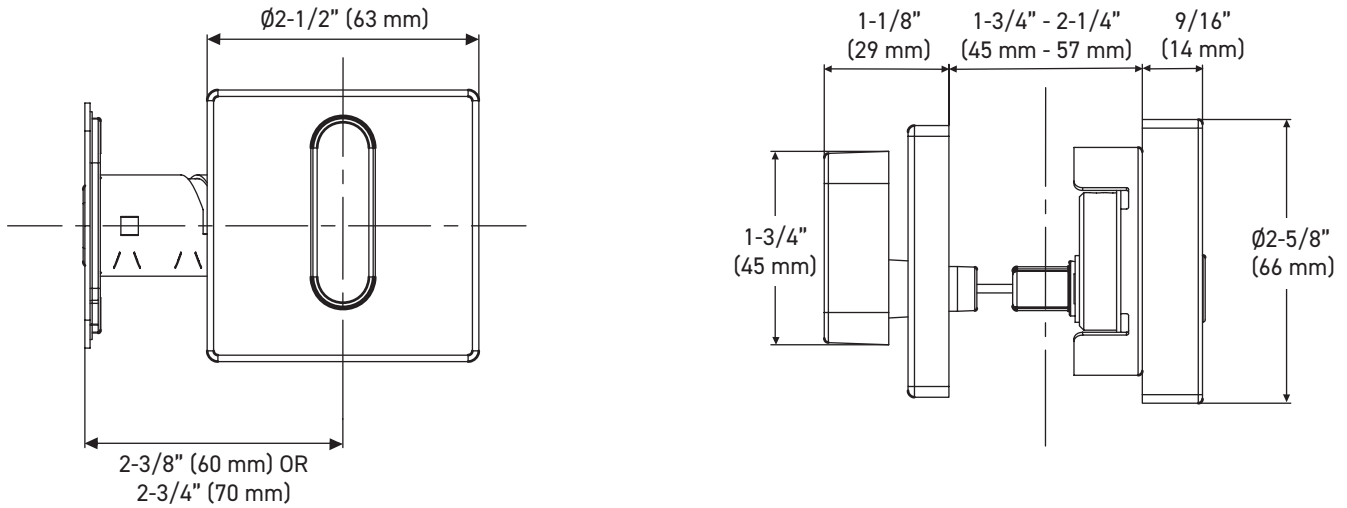
6-IN-1 LATCH



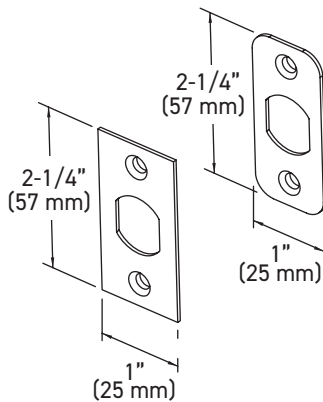
HIGH SECURITY STRIKE



SQUARE FLUSH DEADBOLT LOCK ASSEMBLY



6-IN-1 LATCH



TWIST ADJUSTABLE
 $2-3/4"$ (70 mm) OR
 $2-3/8"$ (60 mm)

HIGH SECURITY STRIKE

