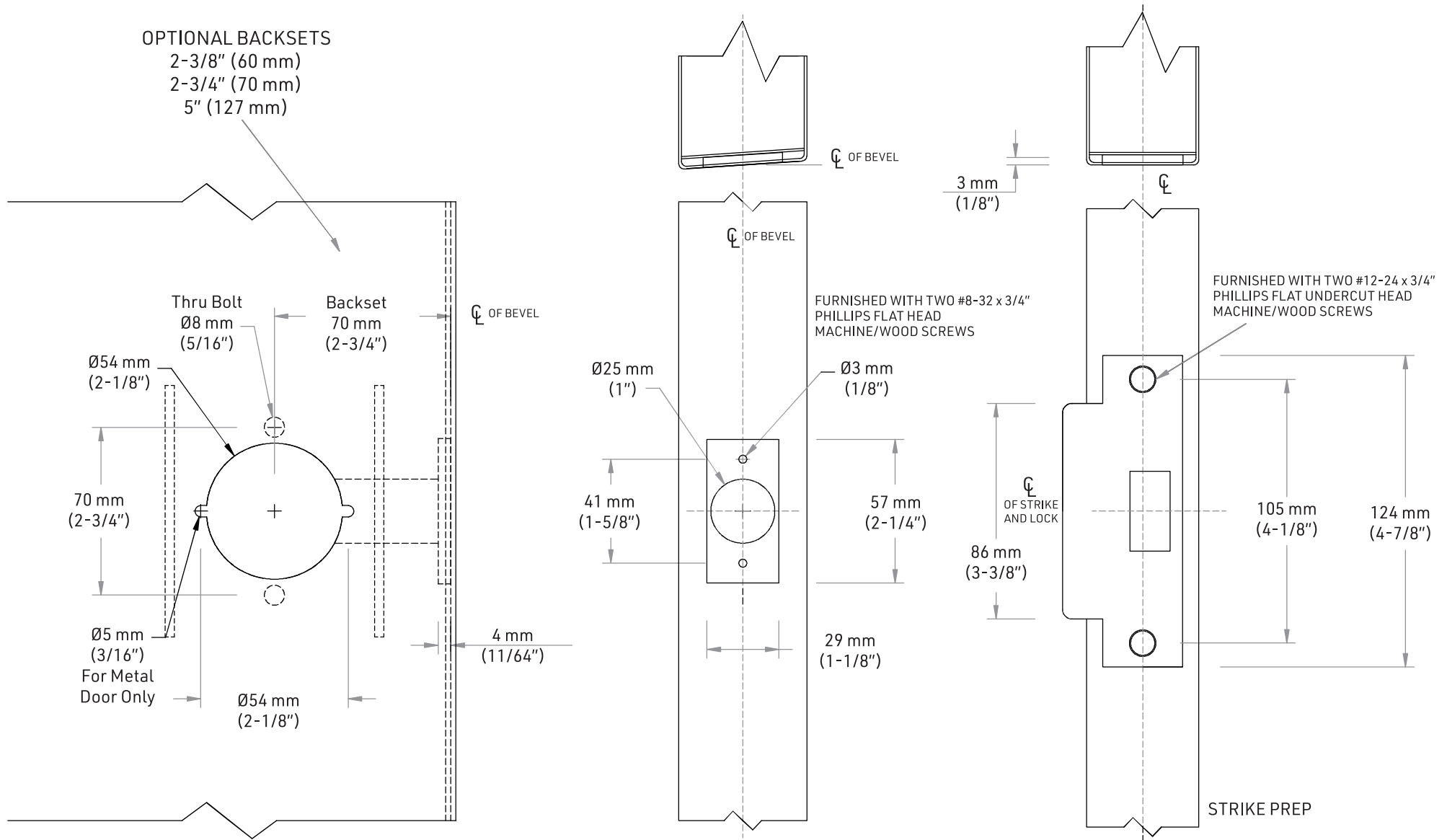



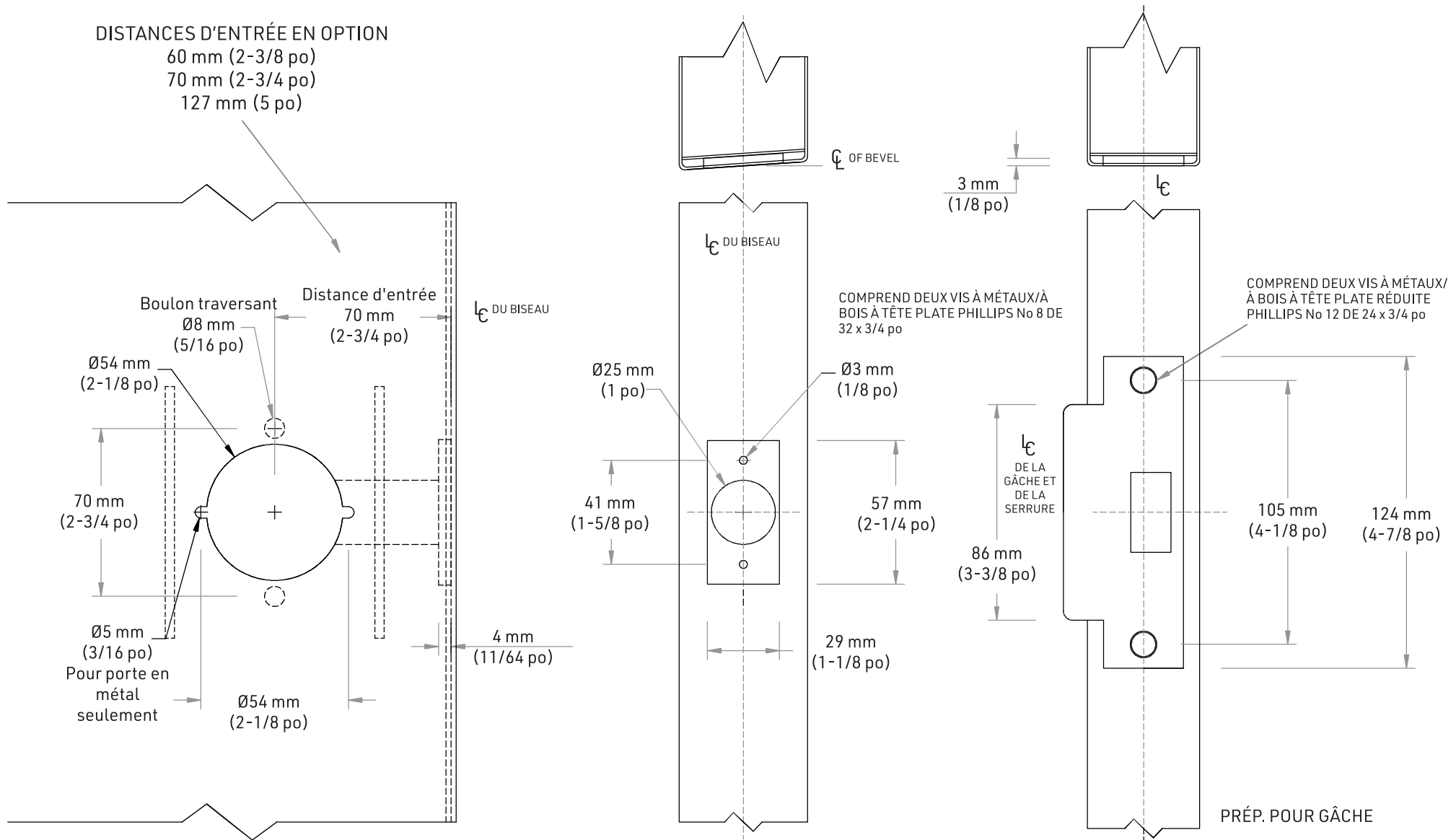
DOOR PREP DETAILS - METAL G2 CYLINDRICAL LOCK



SUITABLE REINFORCEMENT IS REQUIRED

 TAYMOR INDUSTRIES LTD. 32-49XX EXCALIBUR LEVER 32-64XX EMPRESS LEVER 32-79XX DUKE LEVER SERIES ANSI G2 CYLINDRICAL LOCKS	RELEASE DATE
	DEC. 12, 2023
	TEMPLATE NO.
	T32GE02-M

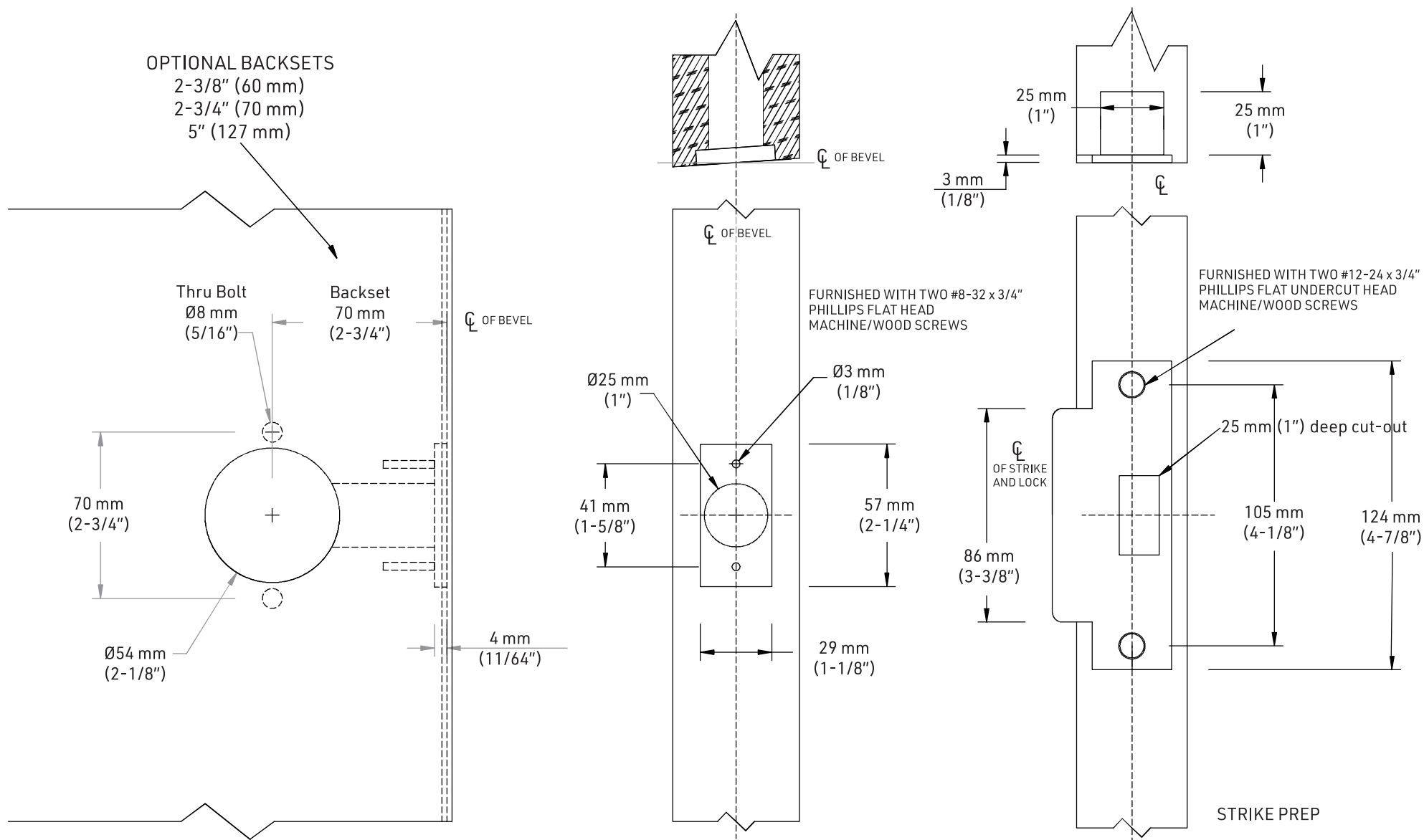
DÉTAILS DE LA PRÉP. POUR PORTE - SERRURE CYLINDRIQUE Q2 POUR PORTE EN MÉTAL




UN RENFORCEMENT APPROPRIÉ EST NÉCESSAIRE

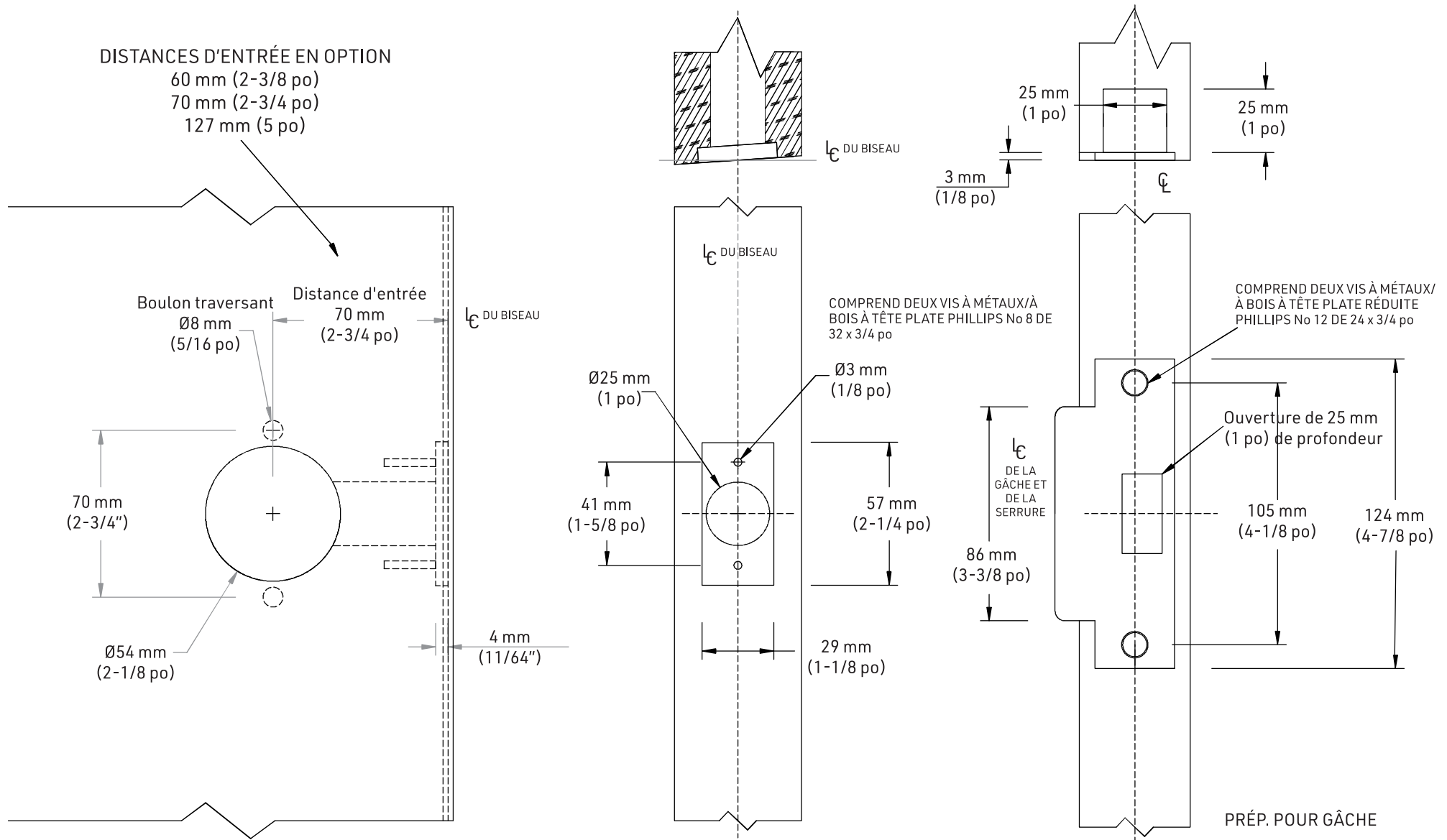
	TAYMOR INDUSTRIES LTD. LEVIERS EXCALIBUR 32-49XX LEVIERS EMPRESS 32-64XX LEVIERS DUKE 32-79XX SERRURES CYLINDRIQUES DE SÉRIE ANSI Q2	DATE DE SORTIE DEC. 12, 2023
		No DE GABARIT T32GE02-M


DOOR PREP DETAILS - WOOD OR COMPOSITE G2 CYLINDRICAL LOCK



 TAYMOR INDUSTRIES LTD. 32-49XX EXCALIBUR LEVER 32-64XX EMPRESS LEVER 32-79XX DUKE LEVER SERIES ANSI G2 CYLINDRICAL LOCKS	RELEASE DATE
	DEC. 12, 2023
	TEMPLATE NO.
	T32GE02-M

DÉTAILS DE LA PRÉP. POUR PORTE - SERRURE CYLINDRIQUE Q2 POUR PORTE EN BOIS OU EN MATÉRIAUX COMPOSITES



 TAYMOR INDUSTRIES LTD. 32-49XX EXCALIBUR LEVER 32-64XX EMPRESS LEVER 32-79XX DUKE LEVER SERIES ANSI G2 CYLINDRICAL LOCKS	DATE DE SORTIE
	DEC. 12, 2023
	No DE GABARIT
	T32GE02-M