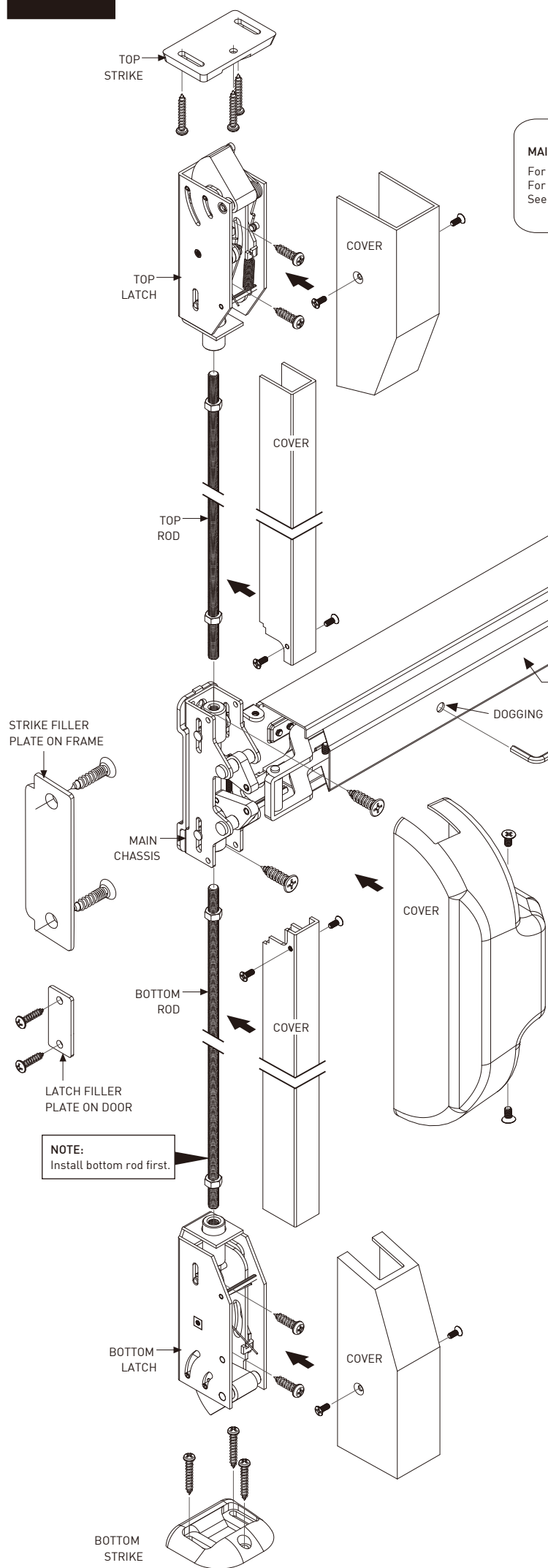


INSTALLATION INSTRUCTIONS

17-8536VAL
8500V SERIES
PUSH PAD VERTICAL ROD EXIT DEVICE
 LHR DOOR SHOWN (RHR DOOR OPPOSITE)

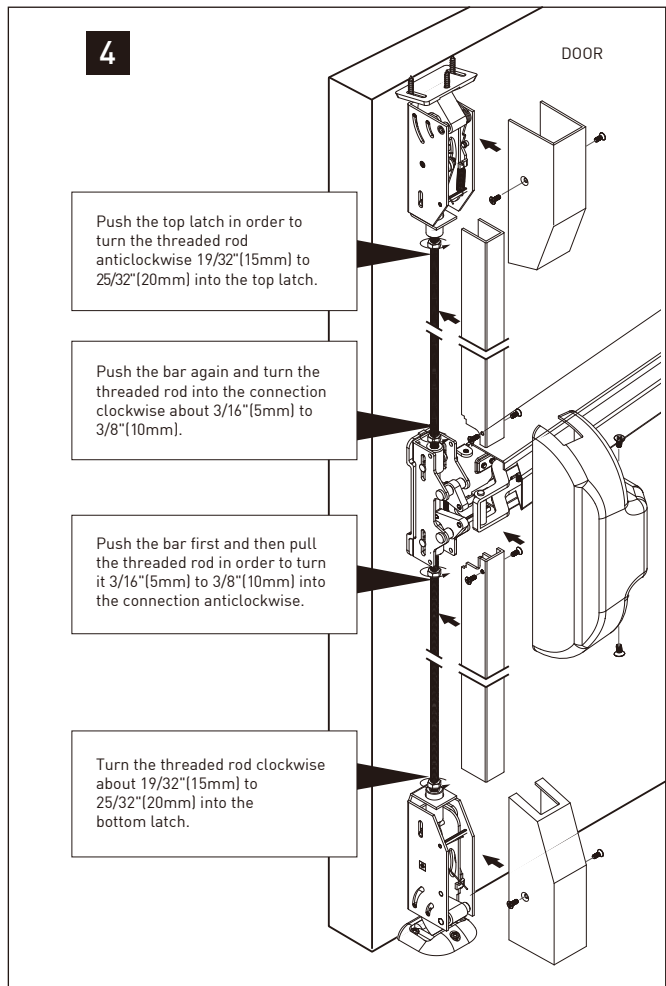
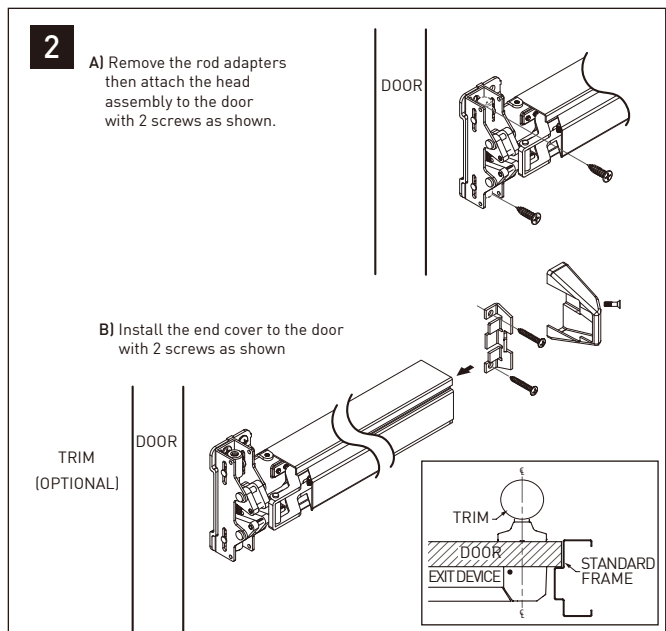
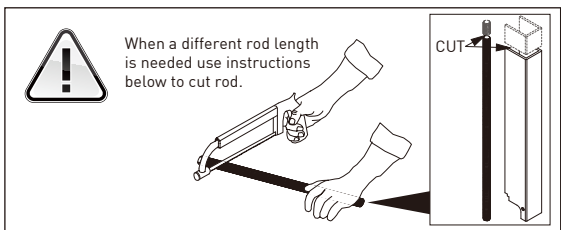
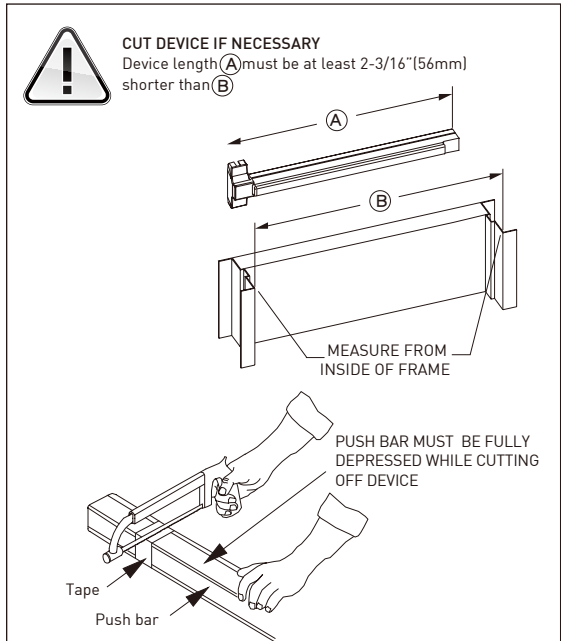
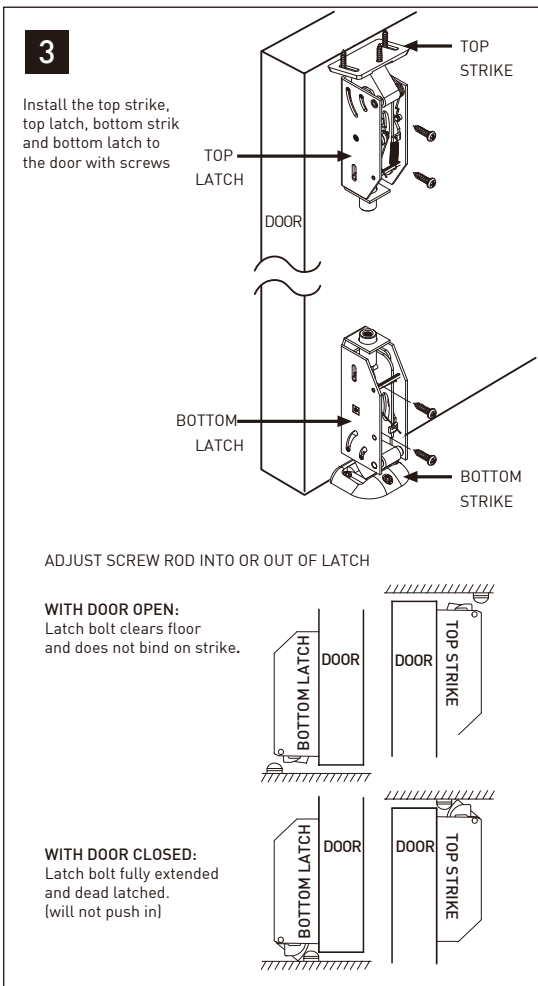
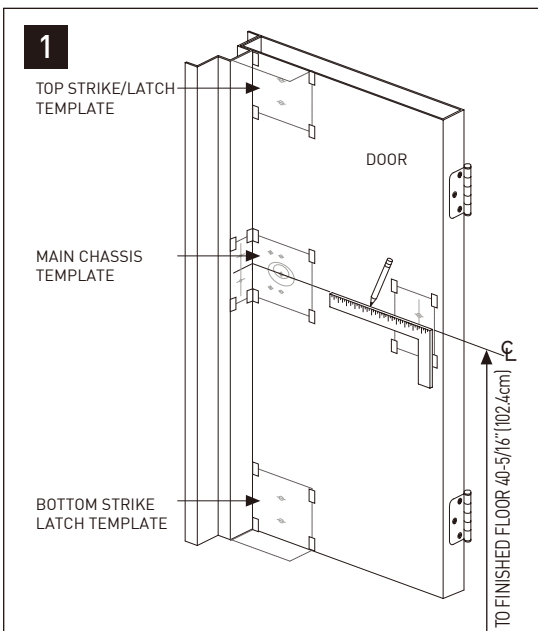
Taymor



MAIN CHASSIS & TOP AND BOTTOM LATCHES MOUNTING SCREWS
 For steel prepared doors, drill / tap and use supplied machine screws.
 For thin gauge metal, non-prepared doors or for labelled wood doors use thru bolts.
 See template for details on mounting screws.

DOGGING:
 Depress push bar, insert dogging wrench and turn 90°. The push bar will remain depressed and the latch will remain retracted.

NOTE:
 Install bottom rod first.



INSTALLATION INSTRUCTIONS

